

▶ PTH SERIES
PTH 700-900-1200

ENG



DRUM CHIPPERS

Whatever wood, the best chips



GREENLINE



PTH 700 - 900 - 1200

Medium power machines within the Pezzolato drum chippers line, their drum diameter measures 660 mm.

They are differentiated by the width of the feeding mouth and wide opening of the upper roller (up to 60 cm). Ideal for producing up to 100 cubic meters of wood chips per hour, guaranteeing high yields.

Powered by tractor Power Take Off or provided with autonomous diesel engine.

The design of the conical hopper (without bottlenecks that tend to trap the material), combined with a catenary system able to move the material directly to the drum, allows feeding of bulk material.





The large fan (1250 mm) mounted directly on the drum shaft is able to work at a low speed (less than 600 revs) to help reduce dust and increase wood chip quality.

Each standard installation includes a single axis trailer which provides compactness and increases agility and manoeuvrability in tight spaces.

The wear parts of all machines are cost effective and simple to replace in short maintenance times.

The drum with cutting system interchangeable where required, makes these chippers ideal for the production of wood chips used with domestic boilers, large power plants or gasifiers.

The integrated computer suggests any ordinary and extraordinary maintenance operations to be performed according to the manufacturer's maintenance plan.





Equipment and accessories

- ✓ NO STRESS electronic device, available on all standard machines, automatically regulates the in-feed of material according to the available power
- ✓ Sieving grids for chip calibration with different sizes, easy to replace
- ✓ Radio or cable remote control, to manage the chippers main activities at a distance
- ✓ Iron track for independently moving the machine in marshy areas or in the factory yard by adding "rubber" pads
- ✓ C-shaped wood-splitter
- ✓ Hydraulic drum rotation starter for model powered by the tractor's Power Take Off in the absence of a progressive movement clutch
- ✓ Hook-lift system





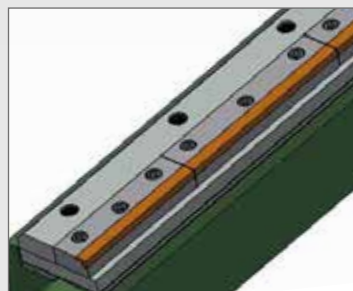
Pezzolato SpA cares for its customers' needs and listens carefully to the machine end-users, further being a flexible and versatile company. Pezzolato machines can be customised through a series of extras.

- ✓ Low- or high-speed towing trailer, with air or hydraulic brakes
- ✓ Forestry cranes, with or without cabin, in customized configuration
- ✓ Discharge belt as an alternative to the fan, for even higher quality wood chips
- ✓ Reversible radiator fan to automatically clean the motor's radiator, thereby saving fuel
- ✓ Collapsible counter-blade
- ✓ Set up on truck
- ✓ Extension for hydraulic tilting hopper, aids feeding certain types of material
- ✓ Telescopic legs enable transportation of the chipping unit on several vehicles
- ✓ Wear-resistant HARDOX metal sheets for discharging fan
- ✓ Hydraulic fan



COUNTER-BLADE

The counter-blade is composed by independent elements. This feature allows, in case of wear or damage, the partial change of the sole worn-out or damaged parts avoiding to restore the complete block and thus saving on the maintenance costs. It is available in two wear proof versions: CHIPPER (steel for tools) or with a standard steel base and a reinforced part (hard metal with tungsten carbides).



Pezzolato cutting technology

The cutting system used by Pezzolato consists of a closed stagger sections drum equipped with knives, a counter-blade and a sieving grid with interchangeable calibration.

This system assures the production of quality chips since the closed drum keeps the chips cutting length fixed and constant. The wood undergoing the knife action is transformed into calibrated chips, which can pass through

the calibration grid immediately after the cut.

Whatever is the need of the customer, either micro-chips for pellet production or extra large chips for the improvement of the big heaters/boilers performance, Pezzolato knows and offers the best cutting technology, thanks to the deep knowledge in Mechanics and the constant R&D of specific solutions.

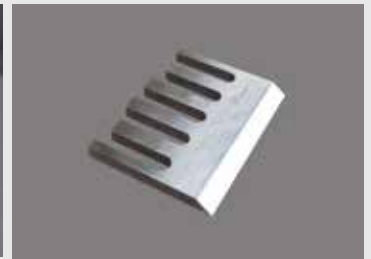


CUTTING SOLUTIONS

STANDARD CUT GROUP

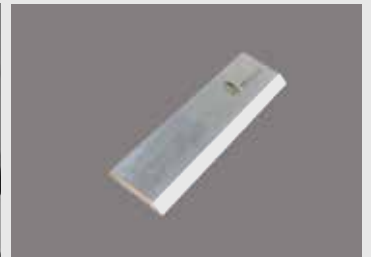
Cut group for the maximum exploitation of the wear components composed by:

- Under knife fixed to the drum by means of screws;
- Knife with eyelets (easy extraction and adjustment of the rear screws);
- Press knife with multiple stud bolts for a facilitated screwing.



FIXING SYSTEM OF THE KNIVES TO THE DRUM "QUICK & SMART"

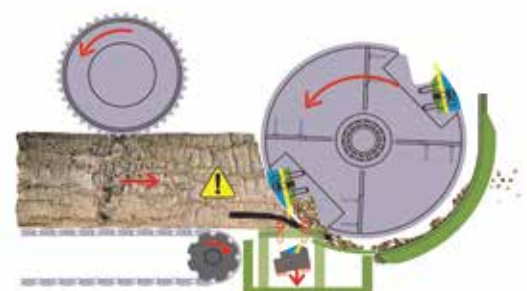
- Knife-support fixed to the drum by means of screws;
- Knife only 60 mm width and 7 mm thick;
- Conical press knife: it allows the blocking of the knife with only 200 Nm, assuring an easy substitution;
- Moderate costs and short times in case of damages to the knives due to the presence of foreign bodies in the biomass.



SECURITY AGAINST THE INTRODUCTION OF FOREIGN BODIES

COLLAPSIBLE COUNTER-BLADE - It's mounted on a running slide and secured with adjusted shear bolts.

Whenever a hard body is accidentally entered into the chipper, the bolts are sheared and the counter-blade falls down, so that the foreign body exits before causing damages.



Technical features

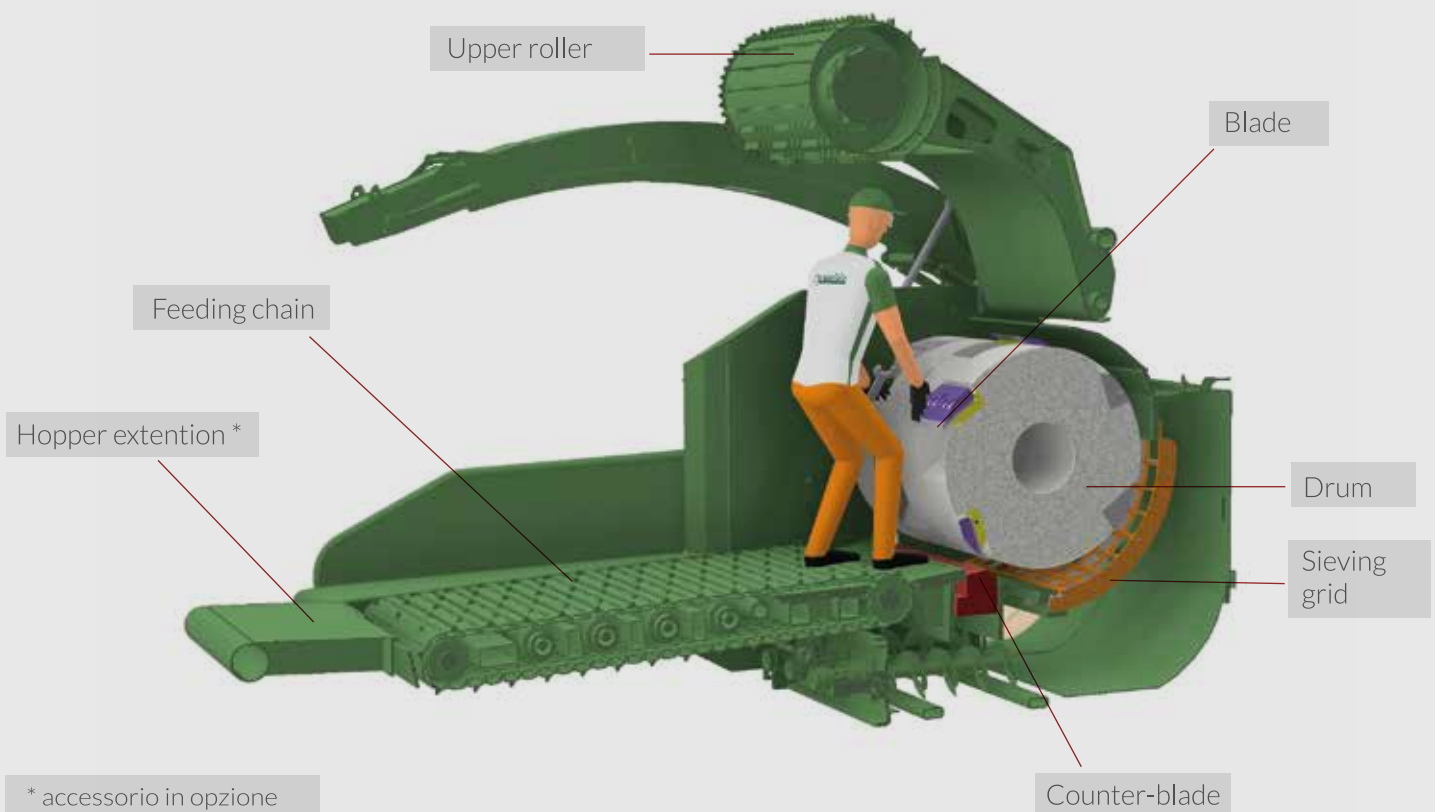
► PTH 700 - PTH 900 - PTH 1200

		PTH 700	PTH 900	PTH 1200
Minimum tractor power	Hp/kW	120/88	140/103	150/110
Maximum tractor power	Hp/kW	220/162	280/207	330/240
Diesel motor power	Hp/kW	200/149 - 413/308	200/149 - 413/308	413/308
Maximum chipping diameter soft wood*	mm	500	500	500
Maximum chipping diameter hard wood*	mm	350	350	350
Maximum inlet passage	mm	640 x 600	950 x 600	1200 x 600
Blade**	n°	3	4	5
Hourly throughput*	m ³ /h	up to 80	up to 100	up to 100
Drum diameter	mm	660	660	660
Drum width	mm	640	950	1200
Feeding chain width	mm	640	950	1200
Feeding chain length	mm	2200	2200	2200
Weight PTO machine (std model)	Kg	5700	8500	9500

* Diameters and declared production are variable according to the available power, wood type and chip size.

** In the case of a double cut system, the number of blades doubles.

PARTS OF PTH



WHATEVER WOOD, THE BEST CHIPS

www.pezzolato.com



DEALER

Pezzolato Officine Costruzioni Meccaniche S.p.a.
Via Provinciale Revello 89, 12030 Envie (CN) - ITALIA
Tel. (+39) 0175 278077 - Mail: info@pezzolato.it