

▶ HACKERTRUCK SERIES  
PTH 1000-1200-1400/820/1000

ENG



## DRUM CHIPPERS

*Whatever wood, the best chips*



GREENLINE



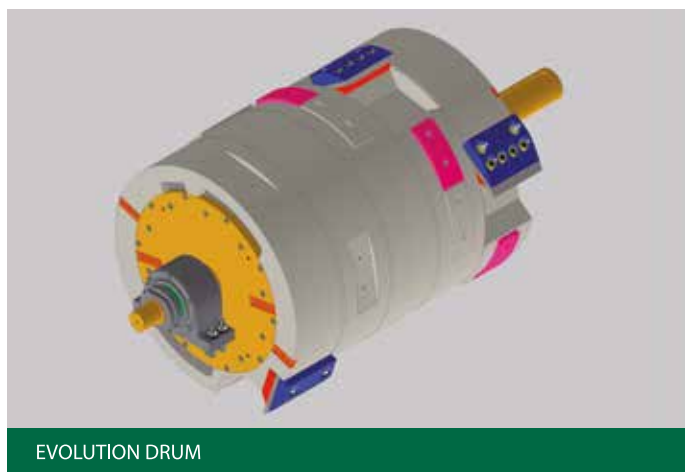
## PTH Hackertruck

The HACKERTRUCK series chippers are mounted on trucks with 3 or 4 axles and are characterised by high power and performance combined with great maneuverability and versatility. In HACKERTRUCK chippers the drive system can use the same engine as the truck in order to eliminate the auxiliary one, so as to unburden the vehicle and to increase the maneuverability.

They can be customised with many settings to make them more versatile to all working condition and are therefore appreciated by large contractors who have to move quickly on many different sites.

The Pezzolato solid drum, well-known for reliability, wear-resistance and no maintenance, has been designed to guarantee the best quality wood chips, either small or big dimensions. It is staggered section type in order to distribute the machine's effort equally, reducing vibrations, noise and consumption.

The sharp cut through the blades and the large drum's inertia reduce the machine's efforts and stress, thus confirming the well-known solidity of Pezzolato drum chippers.



EVOLUTION DRUM



HEAVY DUTY DRUM



## REALISATION

A continuous R & D program supports Pezzolato's development and manufacturing. Wholly performed in house, own specialised personnel follow every single step up to the delivery of all machines.

## COMPONENTS

All hydraulic, electric and electronic components mounted on Pezzolato chippers are supplied exclusively by prime-quality European manufacturers.

## ASSISTANCE

Technical assistance is provided quickly and performed by own personnel. Specialised Pezzolato technicians are always available to intervene directly or to support local authorised dealers and service facilities.

## SPARE PARTS

Thanks to its large stock, Pezzolato is able to send and deliver any spare parts at customers' premises all over the world, within 24/48 hours.



Transport position 1200-1000/32T



Electronic controller with 7" "touch screen" panel



## Equipment and accessories

- ✓ Sieving grids for chip calibration with different sizes easy to replace
- ✓ System for replacing grid with electric winch
- ✓ Forestry cranes, with or without cabin, in customised configuration



## Angle of the hopper

Hydraulic angling of the hopper, for chipping very long material that is difficult to manage. Useful also for chipping whole trees



Machine with hopper in standard position



Machine with angled hopper



Hydraulic angling system



## Equipment and accessories

- ✓ Hydraulic side to facilitate the feeding of voluminous material
- ✓ Radiators adequately sized for hydraulic oil and gearbox oil cooling, complete with reversible fan behind the cab of the truck



### Hydraulic ejection fan

With continuous speed adjustment allows to adjust the rpm according to the real need, thus reducing energy consumption and the production of fines.



Fan hydraulic motor



Fan at average speed



Fan at maximum speed



## Equipment and accessories

- ✓ Extension for hydraulic tilting hopper, aids feeding certain types of material
- ✓ Discharge belt as an alternative to the fan, for even higher quality wood chips
- ✓ Hydraulic opening counter-blade



Discharge belt

## Accumulation hopper

Sides for turning the loading hopper into an accumulation hopper and which allow the machine to handle feeding of very short material even with the aid of a bucket.



Quick attachments for hopper sides



PTH 1200-1000 accumulation hopper sizes



## Equipment and accessories

- ✓ Automatic greasing system
- ✓ Radio remote control for extraction of the material and feeding chain
- ✓ Black box for continuous monitoring relating to GPS
- ✓ Inspection camera



Automatic greasing system

## Wood splitter

C-shaped hydraulic log splitter, splitting passage diameter 900 mm. It allows the reduction of too large logs directly on the forestry site during the chipping phase without the need for further steps.





## Modified cabin

Modified cabin with with a great rear and lateral window. The turning seat gives the operator the maximal view of the operating area and allows to operate with the best comfort sheltered from dust and noise. Possibility of cabin with bunk.

- ✓ Sleeping cabin available.
- ✓ Possibility of controls in the cabin of the tractor/crane for movement along the stack, from the operator's chipping position (check vehicles and option availability).



VOLVO truck cabin (panoramic roof)



MAN truck cabin



SCANIA truck cabin with straight glass



SCANIA truck cab with inclined glass

## Tornado Version

The "Tornado" version is also available, fitted on a 510 HP MAN 6x6 truck, with high visibility rotating cab for operator comfort, both in the transport position and in the working position. This version is also characterized by the hydraulic fan positioned in the center of the vehicle, which allows unloading from the front to the cabin in addition to the usual lateral and rear positions.



# Pezzolato cutting technology

The cutting system used by Pezzolato consists of a closed stagger sections drum equipped with knives, a counter-blade and a sieving grid with interchangeable calibration.

This system assures the production of quality chips since the closed drum keeps the chips cutting length fixed and constant. The wood undergoing the knife action is transformed into calibrated chips, which can pass through

the calibration grid immediately after the cut.

Whatever is the need of the customer, either micro-chips for pellet production or extra large chips for the improvement of the big heaters/boilers performance, Pezzolato knows and offers the best cutting technology, thanks to the deep knowledge in Mechanics and the constant R&D of specific solutions.

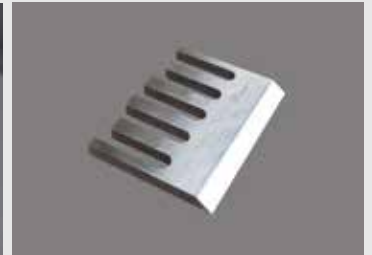


## CUTTING SOLUTIONS

### STANDARD CUT GROUP

Cut group for the maximum exploitation of the wear components composed by:

- Under knife fixed to the drum by means of screws;
- Knife with eyelets (easy extraction and adjustment of the rear screws);
- Press knife with multiple stud bolts for a facilitated screwing.



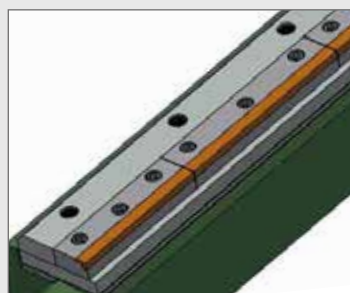
### FIXING SYSTEM OF THE KNIVES TO THE DRUM "QUICK & SMART"

- Knife-support fixed to the drum by means of screws;
- Knife only 60 mm width and 7 mm thick;
- Conical press knife: it allows the blocking of the knife with only 200 Nm, assuring an easy substitution;
- Moderate costs and short times in case of damages to the knives due to the presence of foreign bodies in the biomass.



## COUNTER-BLADE

The counter-blade is composed by 6 independent elements. This feature allows, in case of wear or damage, the partial change of the sole worn-out or damaged parts avoiding to restore the complete block and thus saving on the maintenance costs. It is available in two wear proof versions: CHIPPER (steel for tools) or with a standard steel base and a reinforced part (hard metal with tungsten carbides).



# Technical features

## ► PTH 820 HACKERTRUCK

		PTH 1000/820	PTH 1200/820	PTH 1400/820
Truck's engine power	Hp/kW	510-540 / 375-397	510-540 / 375-397	510-540 / 375-397
Maximum chipping diameter soft wood*	mm	600	600	600
Maximum chipping diameter hard wood*	mm	450	450	450
Maximum inlet passage	mm	1000 x 900	1200 x 900	1400 x 900
Blade**	n°	4	5	5
Produzione oraria:	m³/h	up to 150	up to 180	up to 200
Hourly throughput	mm	820	820	820
Drum width	mm	1000	1200	1400
Feeding chain width	mm	1000	1200	1400
Feeding chain length	mm	2000	2000	2200
Hopper width	mm	1800	2000	2000

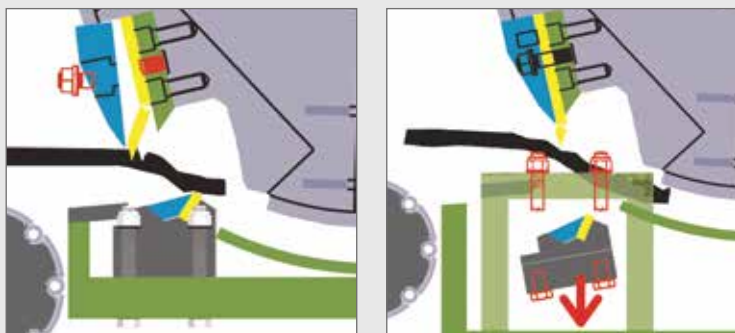
\* Diameters and declared production are variable according to the available power, wood type and chip size

\*\* In the case of a double cut system, the number of blades doubles

## Security against the introduction of foreign bodies

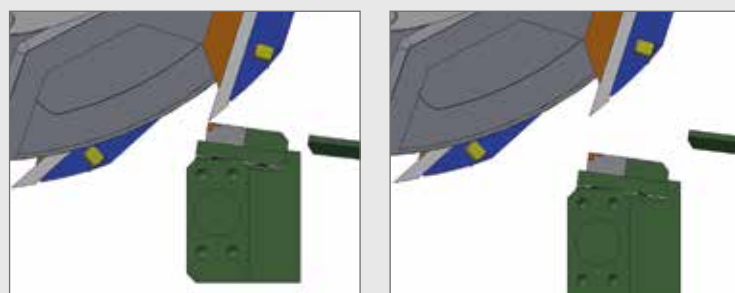
### COLLAPSIBLE COUNTER-BLADE

It's mounted on a running slide and secured with adjusted shear bolts. Whenever a hard body is accidentally entered into the chipper, the bolts are sheared and the counter-blade falls down, so that the foreign body exits before causing damages.



### HYDRAULIC OPENING COUNTER-BLADE

The chipper can be equipped, on request, with a counter-blade assembled on a semi-spherical guide, fixed to a hydraulic cylinder, connected to a Nitrogen plenum chamber. Should metal parts, stones or concrete (etc.) enter into the machine, the plenum chamber immediately discharges, so that the counter-blade opens itself giving space to the foreign part. When the counterknife opens, the supply system inverts and, in case of independent motor, the clutch disengages, thus avoiding problems to the machine.



# Technical features

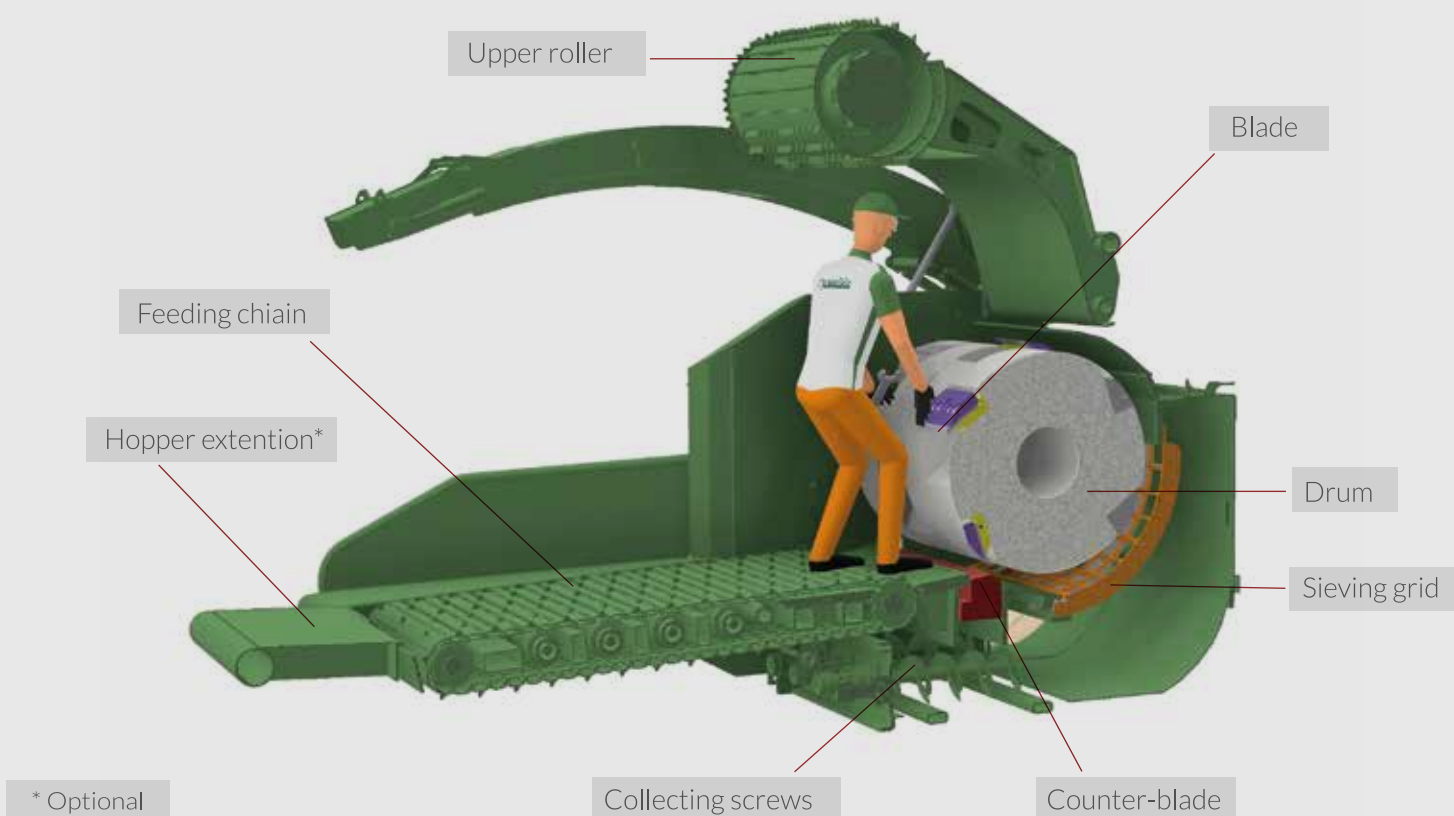
## ► PTH 1000 HACKERTRUCK

		PTH 1000/1000	PTH 1200/1000	PTH 1400/1000
Truck's engine power	Hp/kW	640-750 / 471-551	640-750/471-551	640-750/471-551
Maximum chipping diameter soft wood*	mm	800	800	800
Maximum chipping diameter hard wood*	mm	550	550	550
Maximum inlet passage	mm	1000 x 1100	1200 x 1100	1400 x 1100
Blade**	n°	4	5	5
Hourly throughput	m³/h	up to 220	up to 250	more than 300
Drum diameter	mm	1000	1000	1000
Drum width	mm	1000	1200	1400
Feeding chain width	mm	1000	1200	1400
Feeding chain length	mm	2000	2000	2200
Hopper width	mm	1800	2200	2400

\* Diameters and declared production are variable according to the available power, wood type and chip size

\*\* In the case of a double cut system, the number of blades doubles

## PARTS OF THE PTH



# WHATEVER WOOD, THE BEST CHIPS

[www.pezzolato.it](http://www.pezzolato.it)



DEALER

Pezzolato Officine Costruzioni Meccaniche S.p.a.  
Via Provinciale Revello 89, 12030 Envie (CN) - ITALIA  
Tel. (+39) 0175 278077 - Mail: [info@pezzolato.it](mailto:info@pezzolato.it)